

**You will need:**

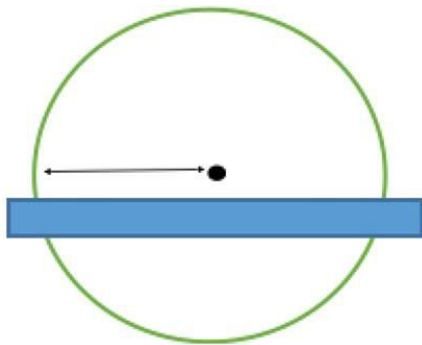
2 x paper plates                      ruler  
pencil                                      scissors  
spilt pin                                  rubber  
A blob of plasticine/blue tac

**For decoration:**

coloured card or paper  
colouring pens /pencils



**STEP 1**



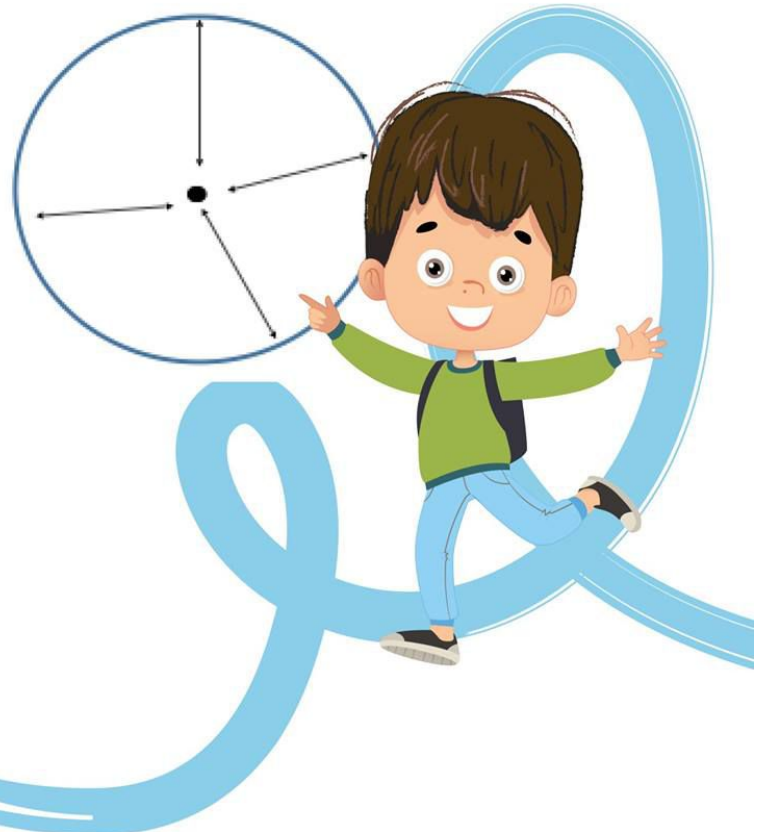
You need to find the middle of one plate. Use a ruler to measure across the middle from side to side (diameter) add a small mark at the middle point.

**STEP 2**

Now measure your plate from top to bottom across the middle - you should be able to line the middle marks up.

**STEP 3**

To check you have found the middle it should measure the same distance from your mark to any of the edges (radius).



**STEP 4**

Now put the second plate underneath the first, put the plasticine under the centre of both plates and use a sharp pencil to make a small hole on your centre mark then push through both plates.

**TIP** - Making sure you don't go below that line cut at the top (smaller section) of the plate off. It doesn't need to be a straight line, it might look good if it's slightly wavy to look like waves and currents in your river.

**STEP 6**

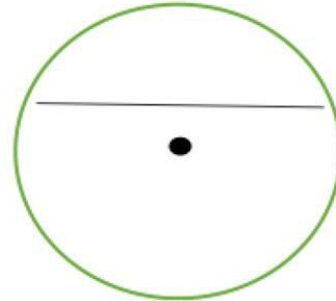
Keep the larger bottom section of your plate and rub out any pencil marks.

It's now ready to decorate, it will be the bottom of your river so could include weeds, reeds, fish and anything else you can think of.

**STEP 8**

Join your plates together using a spilt pin.

**STEP 5**



Take the top plate. With your ruler draw a faint line across the plate about 2cm above the hole.

**STEP 7**

Now put the decorated part of the plate on top of the second plate. The second one will spin around underneath the first when it's joined together at the end. You could decorate it with fish that will look like they are swimming past or boats that are sailing along the river, you could also include the river bank.

Ask an adult to share your completed masterpiece with us on social media using **#DiscoverBrightwater**



@Discoverbwlp

